

BAOSUO is a leading Chinese brand specializing in tissue paper machinery, providing comprehensive solutions covering tissue making, converting, and packaging equipment.

宝索企业集团专注于生活用纸装备领域，中国领先的品牌。专业提供从生活用纸造纸设备、后加工到包装设备的整体解决方案。

Established in 1989, Baosuo has over 30 years of industry experience, with its equipment installed in numerous countries and regions around the world.

宝索企业自1989年起开始运营，拥有30多年行业经验，产品已服务于全球多个国家和地区。

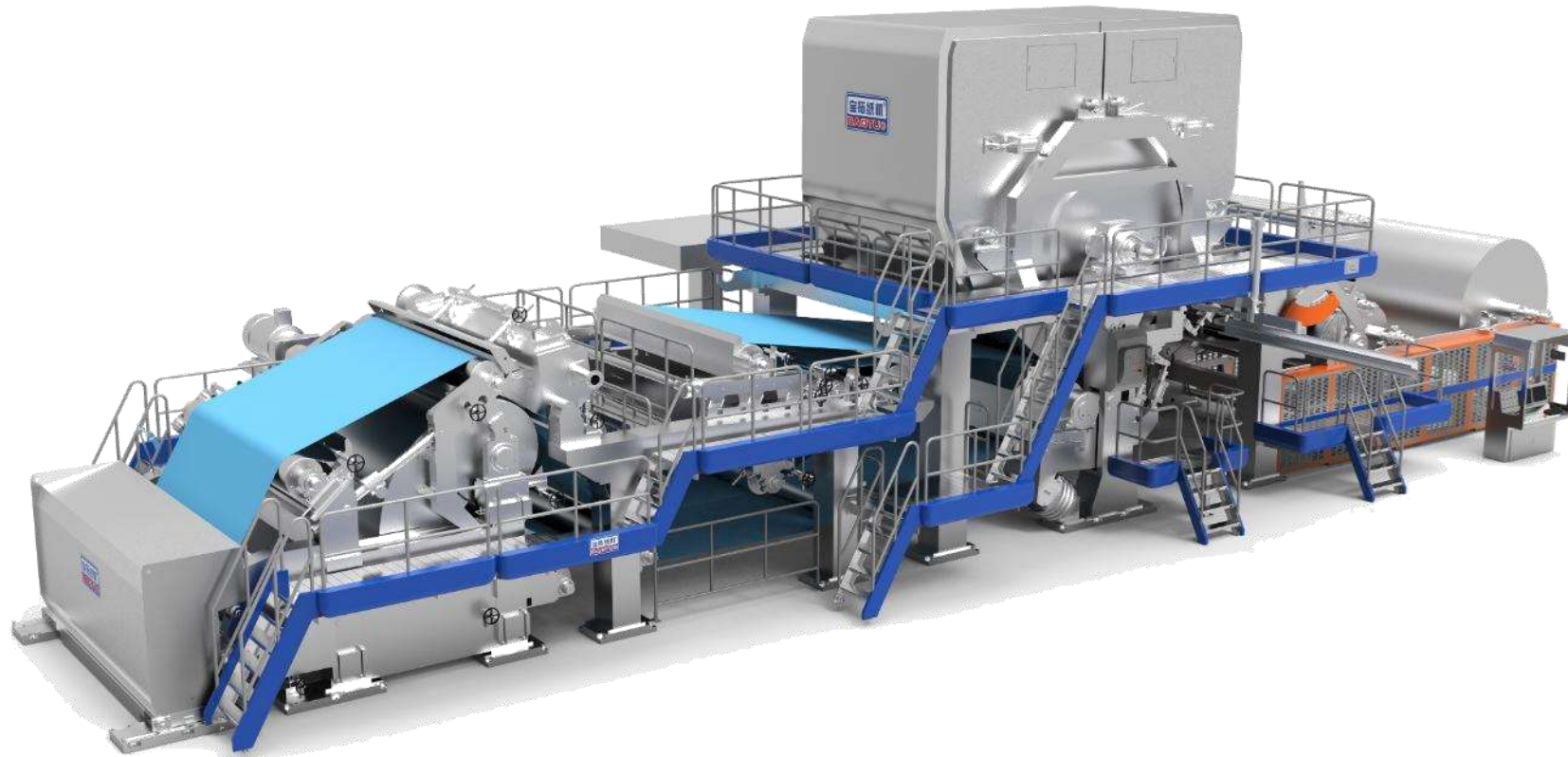


COMPANY INTRODUCTION VIDEO

集团公司视频介绍

Baotuo High-end Crescent Tissue Machine Introduction

宝拓高端新月形纸机介绍



/01

销售业绩
Sales performance



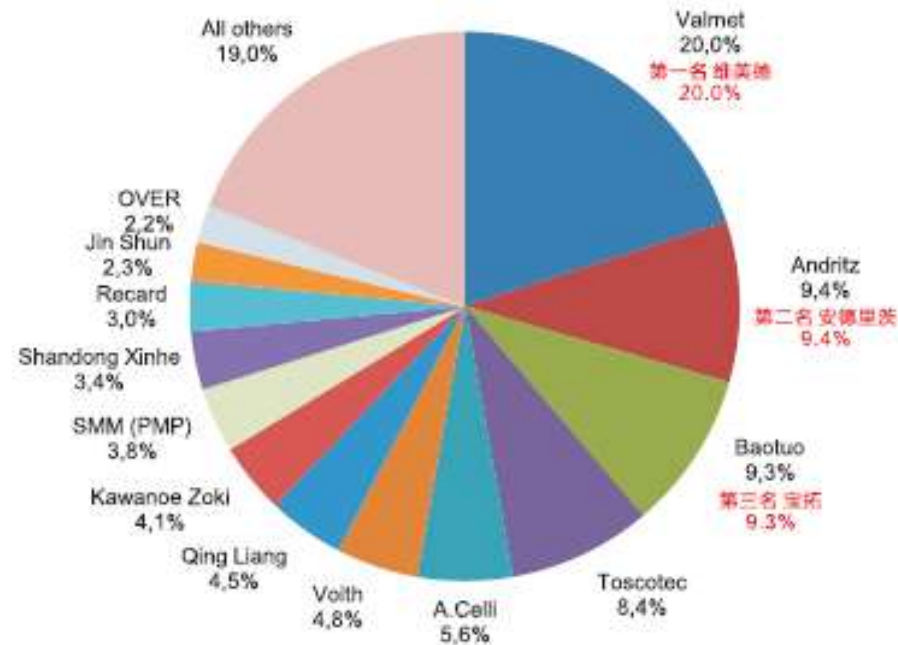
Sales Performance

According to the latest data released by Fastmarkets RISI, the leader in paper industry data analysis, from 2000 to 2025, the total production capacity of the world's tissue paper is 46 million tons, and Baotuo paper machine ranks **3rd** in the world with a total production capacity of 9.3%.

Baotuo paper machine currently sales total **351** sets, in the world paper industry well-known brand partners are: **APP, Asia-Symbol (including Vinda), Hengan Group, Zhongshun C&S, Lee&man Group, SunPaper Group, Taison Group, Zhihu, Shaoneng Group, Libang Group, Huanlong Group**.....After the successful 320,000-ton annual production project with Shaoneng Group, Baotuo once again got a major contract: the **ultra-large 500,000-ton** annual production project for **24** tissue machines at APP's OKI mill in Indonesia!

全球第三！
Third in the world !

According to the data released by "Fastmarkets RISI", the world's authoritative paper industry data analysis leader, Foshan Baotuo has a global market share of 9.3%, and has been ranked **third** in the world's major tissue machine supplier market in the world from 2000 to 2025!



Total machine capacity: 46.0 million tonnes, 2000-2025

Reference list for last 3 years (TM Operation speed > 1600m/min)

近3年卫生纸机案例（运行车速大于1600m/min）

No.	Customer	Project Name	Quantity(sets)	Widths on reel
1	APP	OKI	24	2650mm
2	Hengan Group	Hunan Hengan PM30#	1	3650mm
3		Shandong Hengan PM35#	1	2850mm
4		Chongqing Hengan	4	3650mm
5	Lee&man Group	Chongzuo Lee&man	6	3650mm
6	Sun paper group	Guangxi Sunpaper	2	2850mm
7		Nanning Sunpaper	7	2850mm
8	C&S group	Tangshan C&S	1	3650mm
9	Royal Golden Eagle	Asia Symbol (Guangdong)	2	2850mm
10		SATERI (jiangxi)	4	2850mm
11		Asia Symbol(Guangdong)	4	2850mm
12		SATERI (jiangxi)	4	2850mm

No.	Customer	Project Name	Quantity(sets)	Widths on reel
13	TAISON GROUP	Sichuan Taison	2	3650mm
14		Fujian Taison	2	3650mm
15		Jiangxi Taison	2	3650mm
16		Hubei Taison	2	3650mm
17		Suzhou Taison	4	3650mm
18	Algeria	Algeria international paper	1	3650mm
19	YFY	Taiwan YFY	1	3650mm
20	YFY	Guangdong DingFeng base PM3	1	2850mm
21	YFY	Guangdong DingFeng base PM4	1	2850mm

/02

我们的优势

Our Advantages

Advantages of Baotuo Paper Machine

宝拓纸机的优势

NO.	Advantages	Reference
1	High Operating efficiency and good Operating Stability 纸机运行效率高, 运行稳定性好	Operation performance greater than 98% in Guangdong Asia Symbol, Sateri, Beihai Sun paper. 在广东亚太、赛得利、北海太阳纸机运行效率在98%以上
2	Low Power consumption 纸机电耗占优	≤350KWH/T for paper
3	Low Steam consumption 纸机汽耗占优	≤2.0T/T for paper
4	Low Fresh water consumption 清水消耗少	<5 T/T for paper
5	Short DT and machine delivery time 设计提资,发货快	拥有各种专业的设计团队和生产团队 Professional design and production teams at your service
6	Well service after sales 综合服务好	拥有专业强大的项目服务团队 A powerful project service team ensures smooth project execution
7	Small occupation area 占地面积小	单层结构布置 Single-layer structural layout for maximum efficiency
8	High cost performance 投资性价比高	



全方位新一代创新服务平台 All-round new generation innovative service platform



造纸服务案例 Paper making service case



1. 售前服务项目 Pre-sales service items

- 1) 量身定做生活用纸项目前期规划
- 2) 结合资源优势提供最优解决方案

1) Customized household paper project pre-planning

2) Combine resource advantages to provide the best solution

2. 售中服务项目 Project service items

- 1) 提供最优工艺流程布局、亲临施工现场
- 2) 资深工程人员现场指导安装、调试、开机
- 3) 现场优化、现场验收、现场培训一站式

1) Provide the optimal process layout and visit the construction site

2) Senior engineering staff on-site guidance installation, commissioning, power on

3) Site optimization, site acceptance, site training one-stop

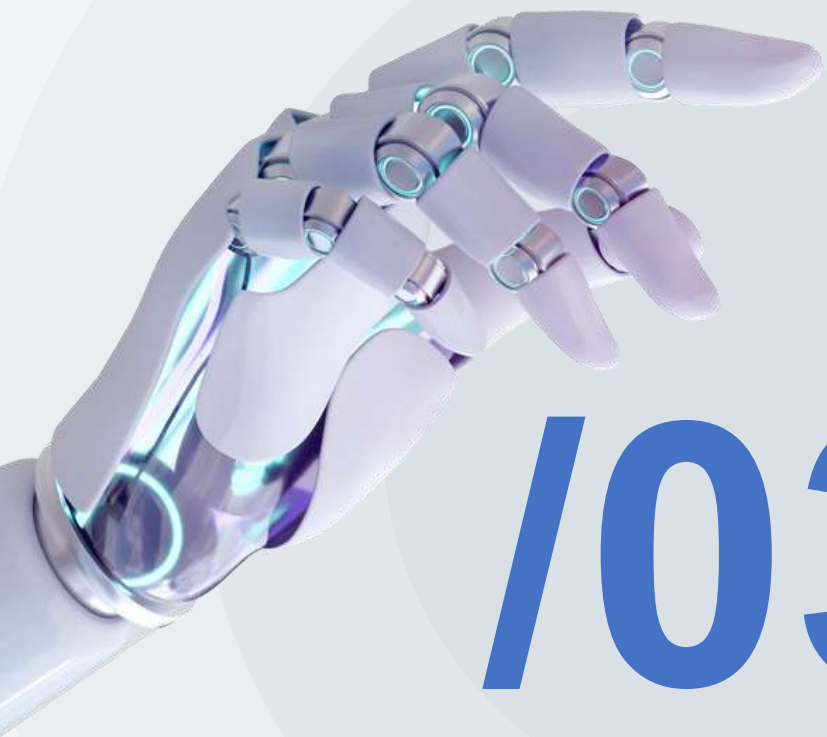
3. 售后服务项目 After-sale service project

- 1) 定期巡检、长期提供技术服务支持
- 2) 提供及配合应对解决问题的处理方案

1) Regular inspection, long-term technical service support

2) Provide and cooperate with solutions to solve problems





/03

纸机设备制造

Tissue machine equipment manufacturing

设备加工 基地

Equipment
Manufacturing
Base

01

**宝索企业总部
BAOSUO HQ**

地址：广东佛山和恩平
Address: Foshan and Enping, Guangdong Province

02

**江南烘缸厂
Jiangnan Dryer**

地址：江苏溧阳
Address: Liyang, Jiangsu Province

03

**辽宁辽阳基地
Liaoyang base**

地址：辽宁辽阳
Address: Liaoyang, Liaoning Province



大型加工设备 Large-scale processing equipment



Main Machine Model Parameter Range 主要机型参数范围

- | | |
|---|------------------------|
| ■ Paper Type 纸种: | Tissue 生活用纸 |
| ■ Width 卷取幅宽: | 2850mm ~ 5650mm |
| ■ Operation Speed (Yankee)
运行速度 (扬克缸处) : | 1300 ~ 2100m/min |
| ■ Gram of Reel 卷取定量: | 11-42 g/m ² |
| ■ Crepe Range 起皱率范围: | 10-35 % |
| ■ Yankee Diameter 扬克缸直径: | 3000mm ~ 6096mm |
| ■ Suction Roll Diameter 真空托辊直径: | 900mm ~ 1450mm |

/04

卫生纸机关键部件简介

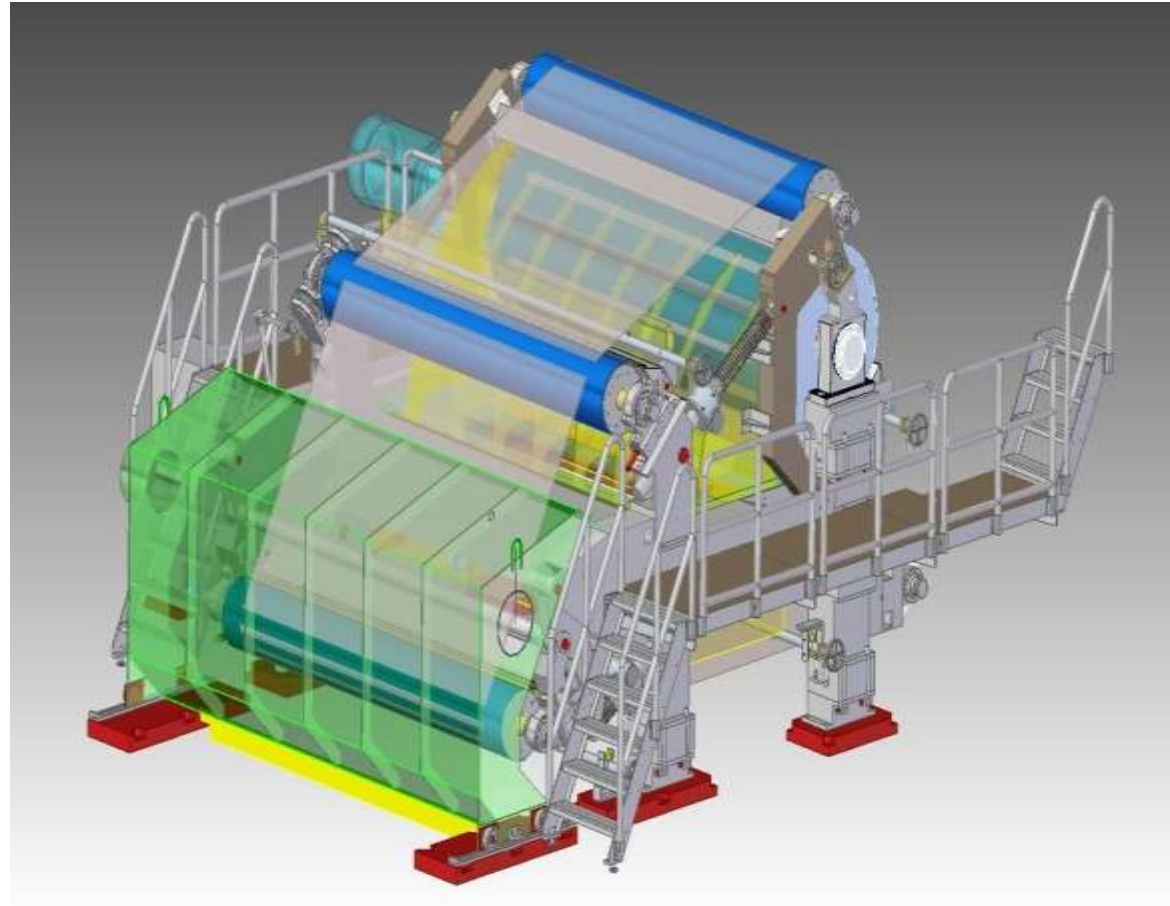
key components of tissue machine

Headbox 流浆箱



Forming Part 成型部

- Four-Rolls construction
四辊结构
- Full cantilever beam design
全悬臂梁设计
- Only **60 mins** for Wire Changing
换网只需 **60分钟**
- All doctors of rolls for wire section
are DST structure
网部所有辊体刮刀采用DST 结构
- All spray pipes with brush
所有喷水管带刷



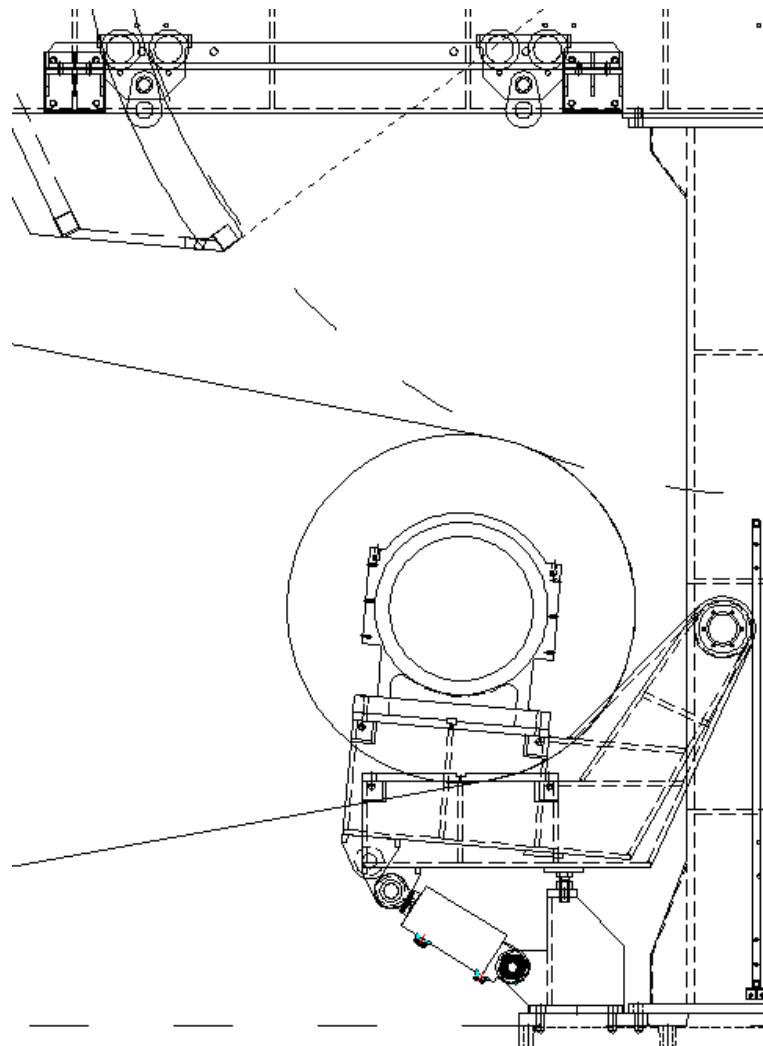
Pressing Part 压榨部



- Cantilever beam structure design - 悬臂梁结构设计
- Felt Changing time **120 mins** - 换毯时间 **120分钟**
- The design includes a driven felt roll, and the Tissue Machine transmission uses sectional drive technology, which distributes the drive load more efficiently. This reduces the main drive's energy consumption and extends the lifespan of the felt. 带驱毯辊设计，纸机传动采用分部驱动技术，传动负载分配更合理，降低主传动电耗，同时毛毯使用寿命延长

Suction Press Roll 真空托辊

- 大辊径设计
Large roll diameter design.
- 液压加载
hydraulic loading
- 机上配吊装工具
Lifting tool on tissue machine
- 左右手机通用
available both for Left and right TM

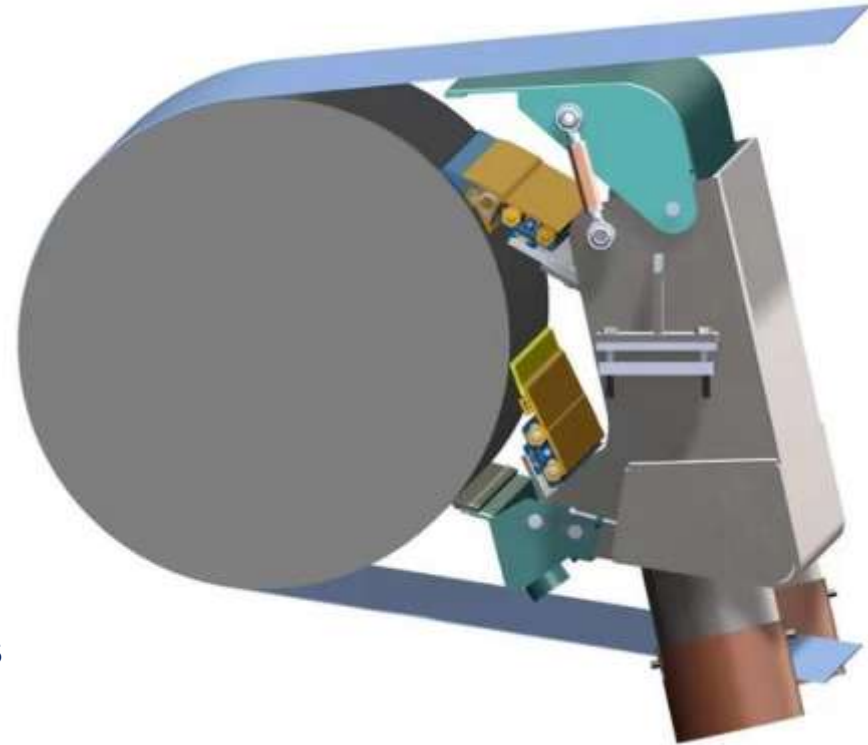


Suction Press Roll 真空托辊



Vacuum Suction Roll- DST 真空托辊双刮刀

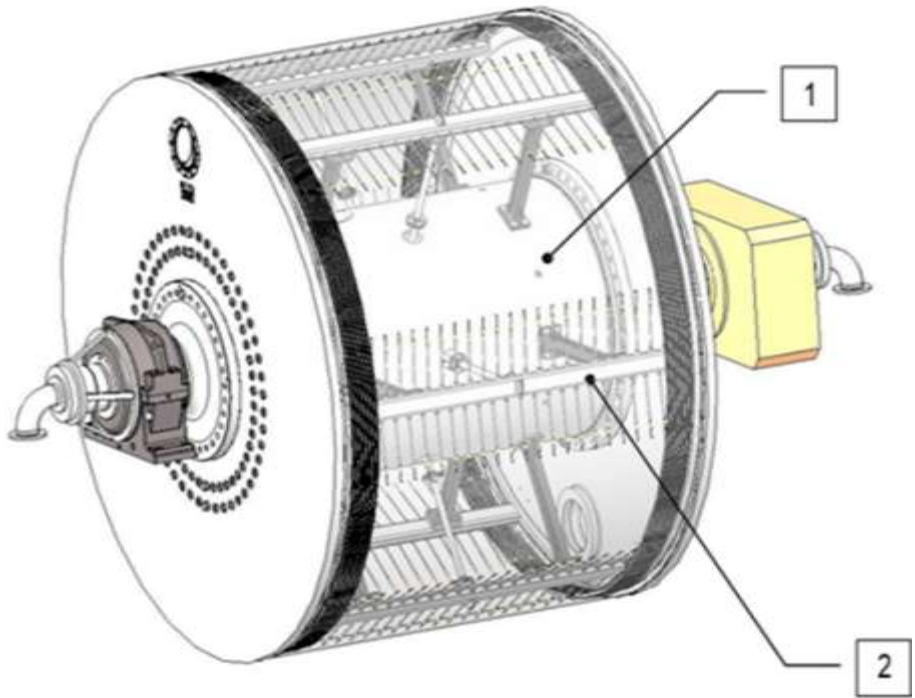
- Increase machine Operation speed and reduce steam consumption
提高纸机车速，减小蒸汽消耗
- Maximizes the prevention of sheet rewetting, enhancing paper dryness.
最大化防止纸页回湿现象，提高纸页干度
- Improves the cross-directional moisture uniformity of the web and reduces the number of paper breaks
提高纸幅横向水分的均匀性，减少断纸次数
- Improve the cleanliness of vacuum roller and reduce the clogging of roller hole
提高真空辊清洁度，减少托辊通孔堵塞现象
- Prolong the service life of the roller and improve the efficiency of the vacuum system
延长真空辊使用寿命，提高真空系统效率



扬克缸 YANKEE Cylinder



Drying Part - Yankee 干部-扬克缸



Steel Yankee Hood 钢制杨克烘缸

- Steel dryers, with over 700 units in use in the tissue paper industry.
选用钢制烘缸，卫生纸行业投用数量超过700台
- The design pressure is 1MPa, the maximum operating pressure is 0.9MPa 设计压力1MPa,最大使用压力0.9MPa
- The drying efficiency reaches **100kg/h·m²**, and the energy saving effect reduces the steam loss by **15%** compared with similar Tissue Machines 烘缸内部带沟汶设计，干燥效率达到**100kg/h·m²**，节能效果比同类纸机减少**15%**的蒸汽损耗
- Dryer end cover with thermal insulation design, reduce the loss of dryer heat.烘缸端盖带保温设计，降低了烘缸热量的损失。
- 中空轴：操作侧进蒸汽，传动侧排冷凝水

Hollow Shaft: Steam is feed on the operational side, and condensate is drained on the drive side.

- 配中空轴减速机

Equipped with a Hollow Shaft Gearbox

辊子 Rolls



**Raw material
原材料**



**Semi-finished product
半成品**



**Semi-finished
product
半成品**



**Finish product
成品**

预组装 Pre-assembly



干部机架Frame for dry



湿部机架Frame for wet



卷取部机架
Frame for reel



打包待交货
Packed to be delivery

Reel Part 卷纸机

- Automatic turn-up system
自动换卷功能
- Paper roll diameter and roll length
online Automatic control
纸卷直径和卷长在线自动控制
- The loading pressure of the
secondary arm is automatically
adjusted, and the paper roll density
is consistent
二次臂加载压力自动调节，纸卷密
度一致



Hydraulic control of primary arm lifting to improve
the stability of the Tissue Machine
一次臂升降采用液压控制，提高纸机运行稳定性

/05

节能技术的应用

**Application of energy-saving
technology**

Drying Part - Heat recovery process 干部-热回收流程



不消耗新鲜蒸汽，蒸汽系统汽耗1.7-2.0t/t纸。
No fresh steam consumed; steam consumption
reduced to 1.7-2.0t/t paper.

Hood exhaust air
气罩排风

梯
级
加
热
Step
Heatin
g

Fresh Air新风

Waste Heat
Recovery
device余热回收
装置

Exhaust
temperature
排风温度
< 80°C

Condensate
Heater
冷凝水加热器

Condensate
冷凝水

Flash steam
heater
闪蒸汽加热器

Flash steam
闪蒸汽

High efficiency and
energy saving Air hood
高效节能气罩

永磁同步电机用于纸机主传动

Permanent magnet synchronous motor used for main drive of paper machine

三相异步电机方案

3-phase asynchronous motor



永磁同步电机方案

Permanent magnet synchronous motor

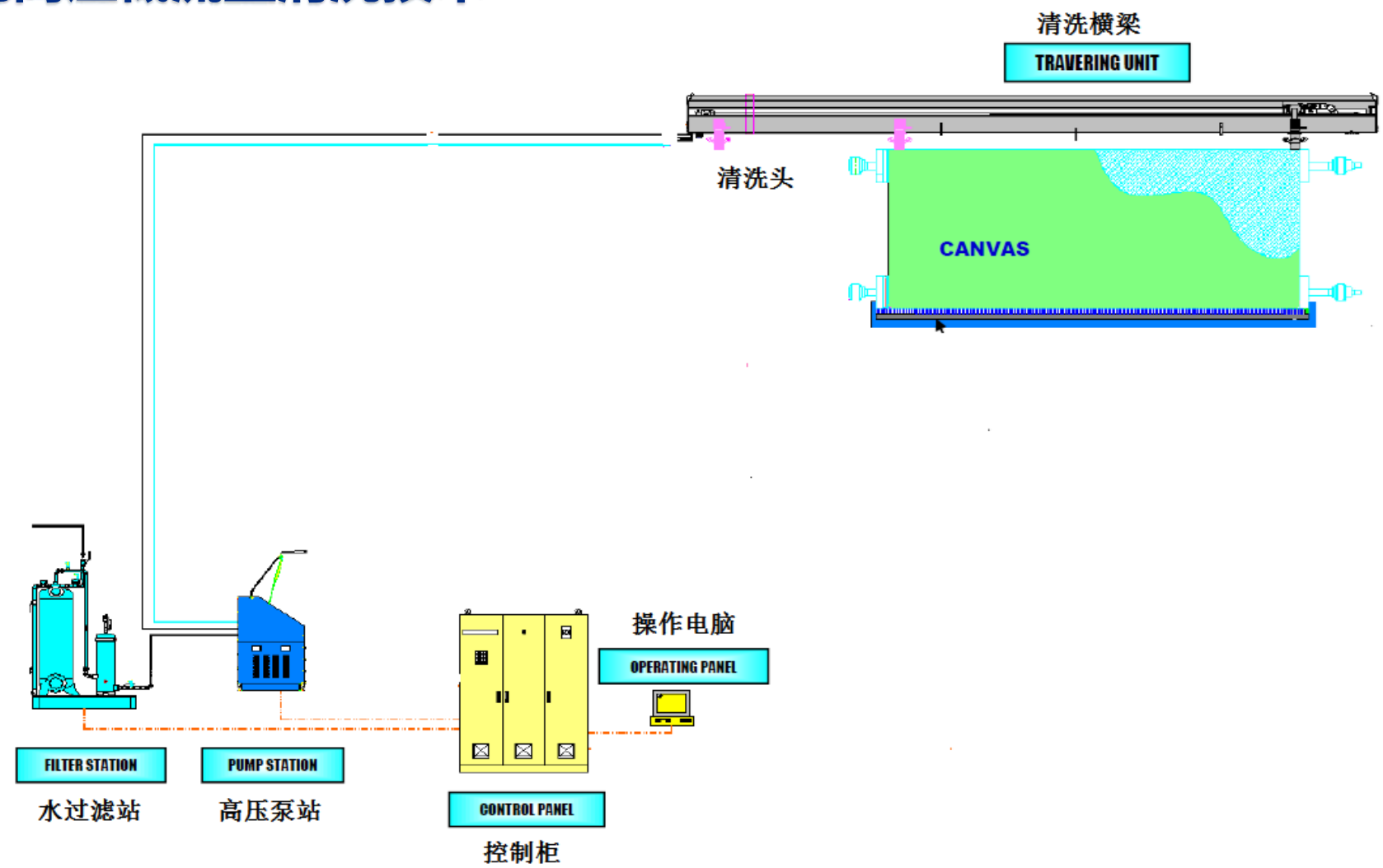


永磁电机方案可节约电耗10 ~ 15%

Permanent magnet synchronous motor can save power 10-15%

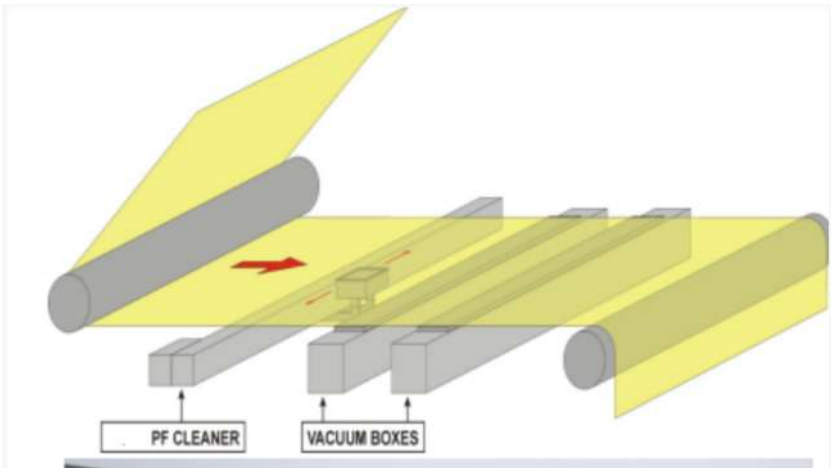
Wire and Felt High pressure Low flow Cleaning technology

网、毡高压低流量清洗技术



Wire and Felt High pressure Low flow Cleaning technology

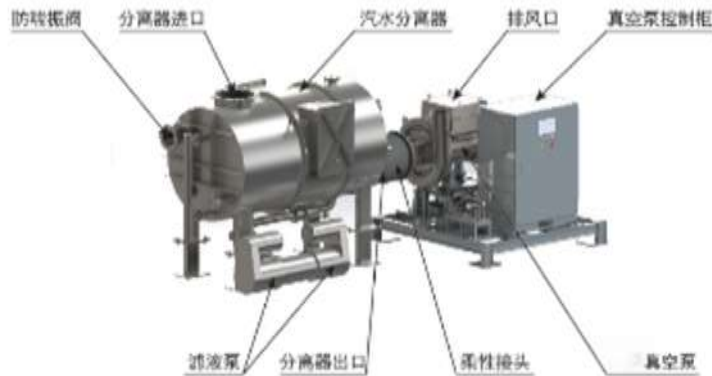
网、毯高压低流量清洗技术



High pressure cleaning advantages 高压清洗优势:	Traditional Type disadvantages 传统移动喷淋清洗劣势:
• 90% savings in Super-clean filtrate consumption 90%节约超清滤液消耗	• 水雾 Water Mist
• Efficient cleaning improves the cleanliness of the Wire 高效清洁提高网子洁净度	• 高压水消耗 高 High Pressure Consumption high
• Reduces paper defects and breakage.减少纸病、断纸	• 喷嘴堵塞导致不均的水份 Nozzle blockage causes uneven moisture distribution.
• Longer service life of wire网子使用寿命-提高	• 开机时无法维修 Maintenance cannot be performed while the machine is running.
• 更好的横幅 Better Web	• 清洗不均匀 Uneven cleaning
• 现场无水雾 No water mist on site	• 需配抽气箱，风机电耗高 Need exhaust box, fan power consumption is high

Uses magnetic levitation turbo fans, with significant energy-saving effects.

选用磁悬浮透平风机，节电效果显著



Prominence analysis 亮点分析

磁悬浮真空透平泵

节能高效

- 高速永磁电机与高效三元流叶轮直接耦合驱动。
- 比水环式真空泵节能40%以上；
- 比多级离心真空泵节能20%以上；
- 比传统单级高速节能10%以上；

低噪音

采用自平衡技术，磁悬浮轴承振动量比传统轴承小一个量级且无摩擦，同时采取主动减振设计，运转稳定，机体振动很小。真空泵噪音在80dB左右。

智能控制

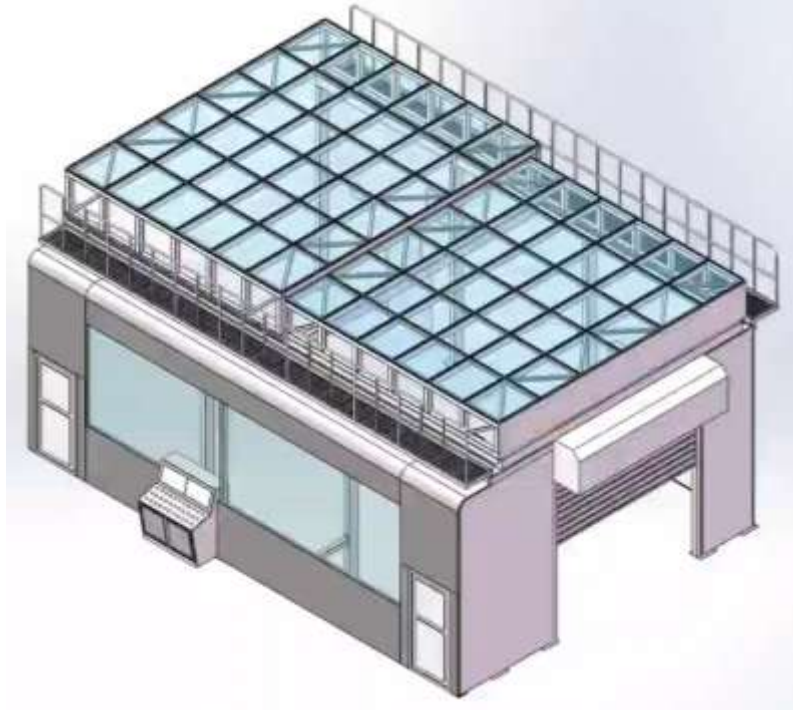
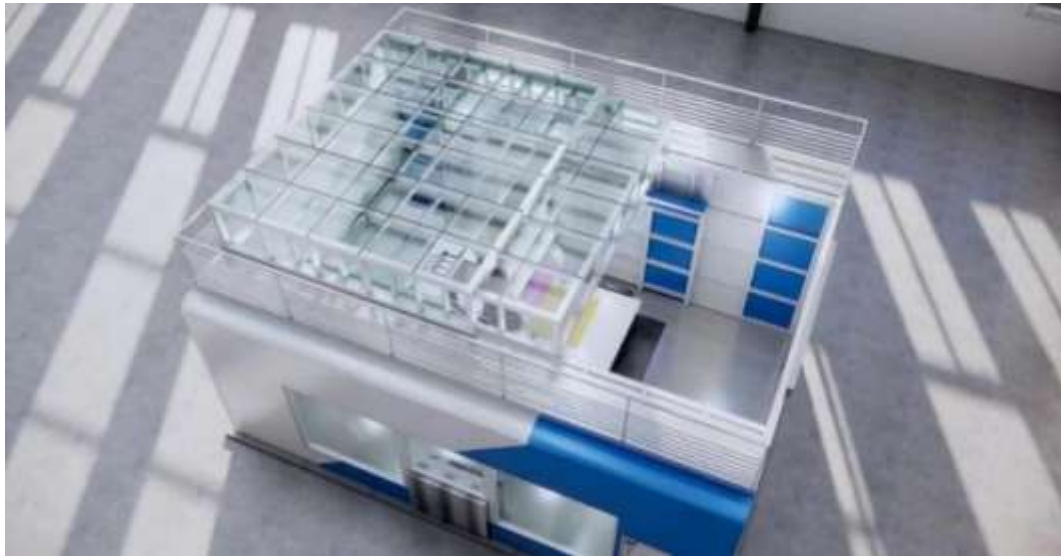
采用 PLC+GPRS/3G/4G，可实时监控真空泵运行状态，实现真空度的智能调控及手动等模式控制。若出现故障，还可以远程维修、调试。

免维护

一体化设计，安装便捷，一键启停。日常运行，免机械维护。

卷取部的全封闭式除尘 Fully enclosed de-dusting of the reel section

- Reduce Dust content of Workshop and improve the working environment
降低车间粉尘, 改善员工工作环境
- Workshop dust $\leq 5\text{mg}/\text{m}^3$, which meets European standards
车间尘埃度 $\leq 5\text{mg}/\text{m}^3$, 达到欧洲标准





Thank you for listening!



科技为宝 创新开拓

